

# MOVAX

SP-40

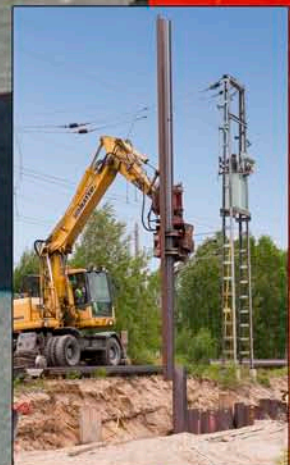
SP-50

SP-60

## SIDE-GRIP



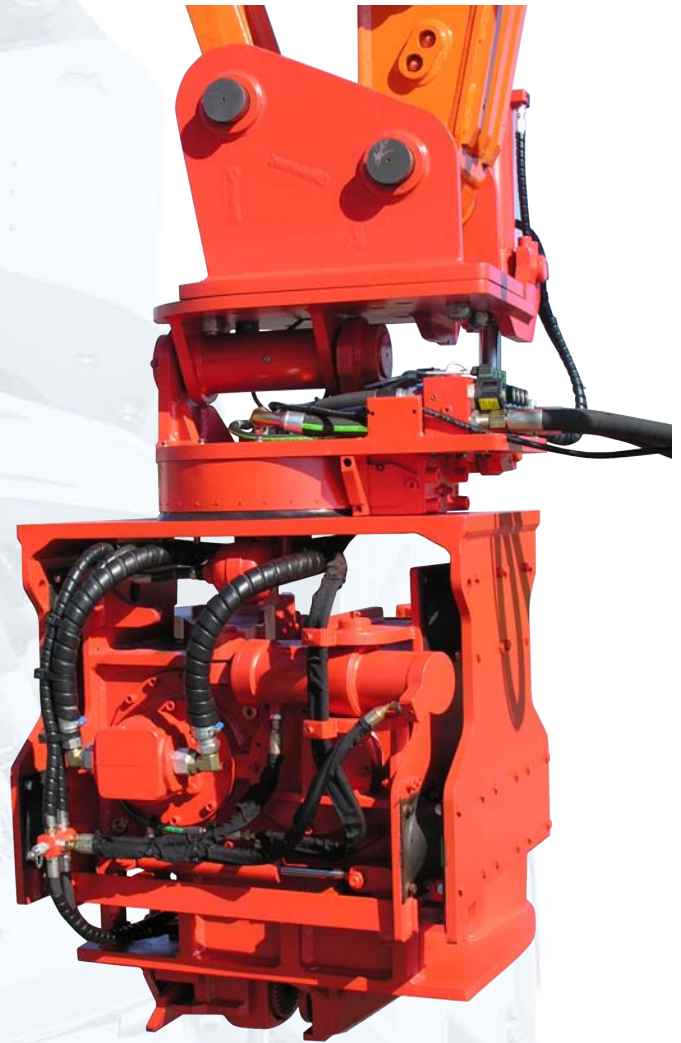
*From 22 to 30 ton*



SP-40E  
SP-50E  
SP-60E

The design of sheet piler SP-E makes it suitable for wheel excavators. Vibra house of SP-E is lighter compared to other models. This increases the stability of excavator. Also the demanded hydraulic power is within the usual limits of the middle-class excavators.

Side-grip technic demands a precise control of the driving movements. This can be reached by using the automatic operating device.



### Technical data

Piler type	SP-40E	SP-50E	SP-60E
Weight without adapter (kg)	1830	1850	1870
Height (mm)	2071		
Depth (mm)	1224		
Width (mm)	972		
Excavator class (ton)	18-20	22-25	25-30
Oil flow (l/min)	120 2)	150 2)	180 2)
Max. return pressure (bar)	5		
Pressure setting (bar)	320		
Frequency (1/min)	3000		
Centrifugal force (kN)	400	500	600
Driving method	vibra		
Swing / tilt angle (o)	360/30		
Number of arms	3+1		
Oil pump (lubrication)	No		
2) Oil flow at 280 bar only I-pump installation allowed			

### Suitable piles

Piler type	SP-40E, SP-50E, SP-60E
Sheet piles	
- Width of the pile (mm)	600-1200
- "Depth" of the pile (mm)	210
- Weight of the pile (kg) lenght over / under 8 m)	800 / 1200
H-beams	
- Min. size	H240
Tubular piles (tubular pile clamps that are fitted to sheet piler's clamps are required)	
- Sizes	Ø220, Ø200, Ø190, Ø170, Ø140, Ø115, Ø90

